

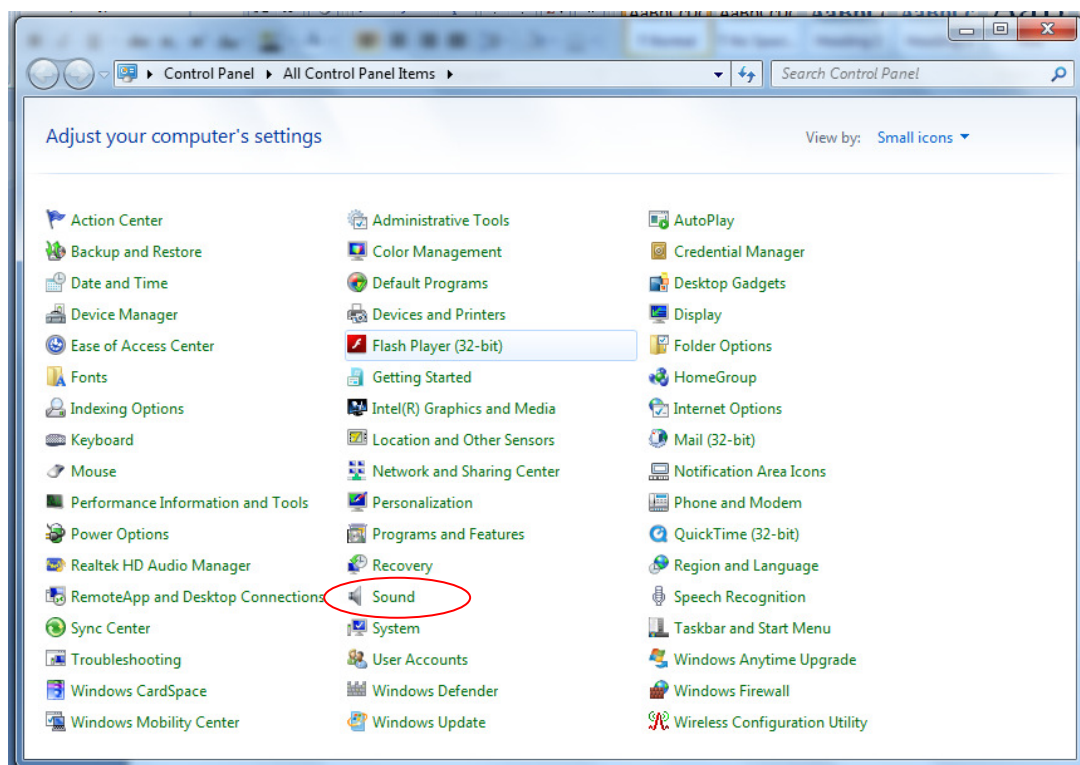
### Windows WASAPI USB audio set-up guide

Windows Vista, Windows 7 and Windows 8 all support Windows Audio Session Application Programming Interface (WASAPI) as an output method. Using WASAPI gives a maximum output of 24-bit/96kHz but has much lower distortion than DirectSound. For Windows Vista or Windows 7 or 8, WASAPI is always preferable to DirectSound.

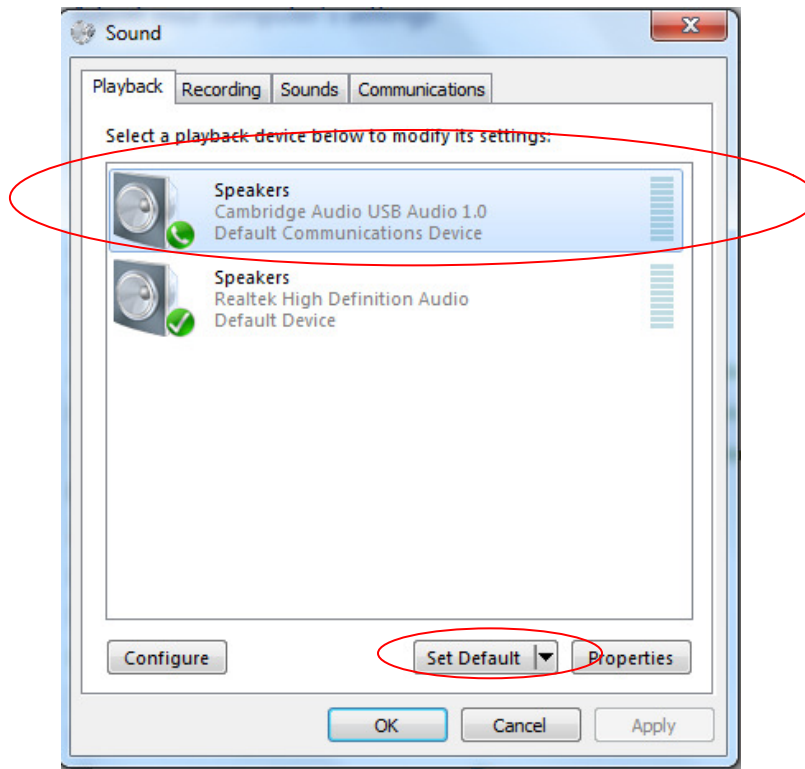
A media player must be used which supports WASAPI output (such as foobar2000) and usually a WASAPI plugin for that media player will also need to be installed.

The example below shows how to configure your PC for use with a Cambridge Audio USB product using WASAPI as an output method. foobar2000 is the media player used in this example.

1. Connect your Cambridge Audio USB product to your PC using a USB Type A to Type B cable. When the USB product is switched on, a dialogue box will appear at the bottom of your screen letting you know that a Cambridge Audio USB 1.0 device has been connected.
2. Enter the Control Panel and select Sound to set the Cambridge Audio product as the default audio device



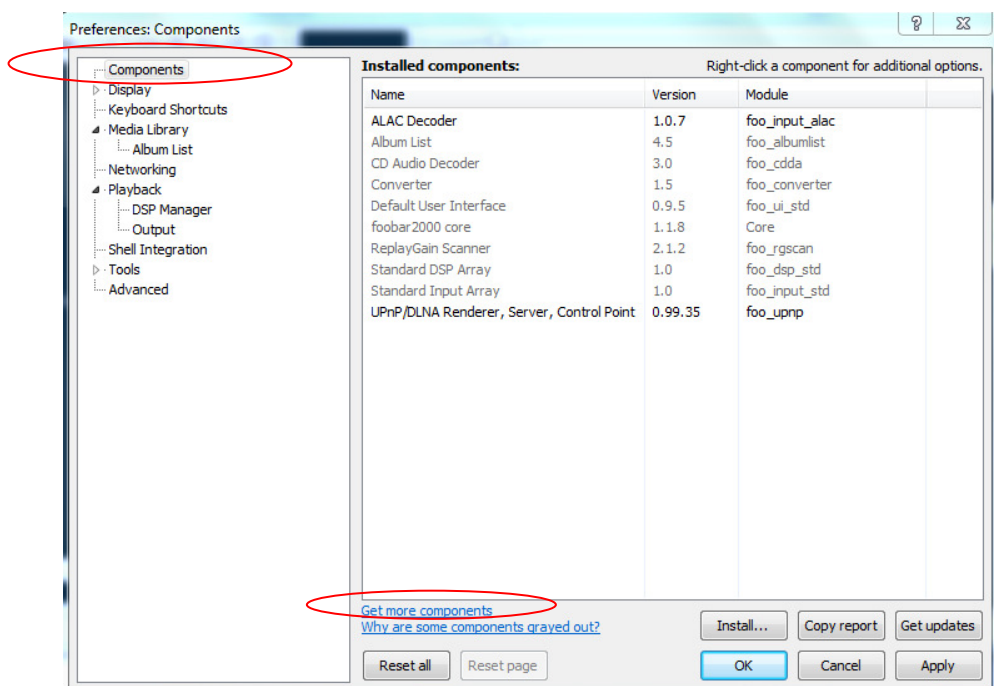
Select the Cambridge Audio USB Audio 1.0 device and click Set Default



Press OK to exit

Now, all audio output by the PC will be output via USB to the Cambridge Audio USB product.

3. Install foobar2000. You then need to manually install the WASAPI output support plugin. To do this, from the foobar2000 UI go to File > Preferences > Components > Get more components.



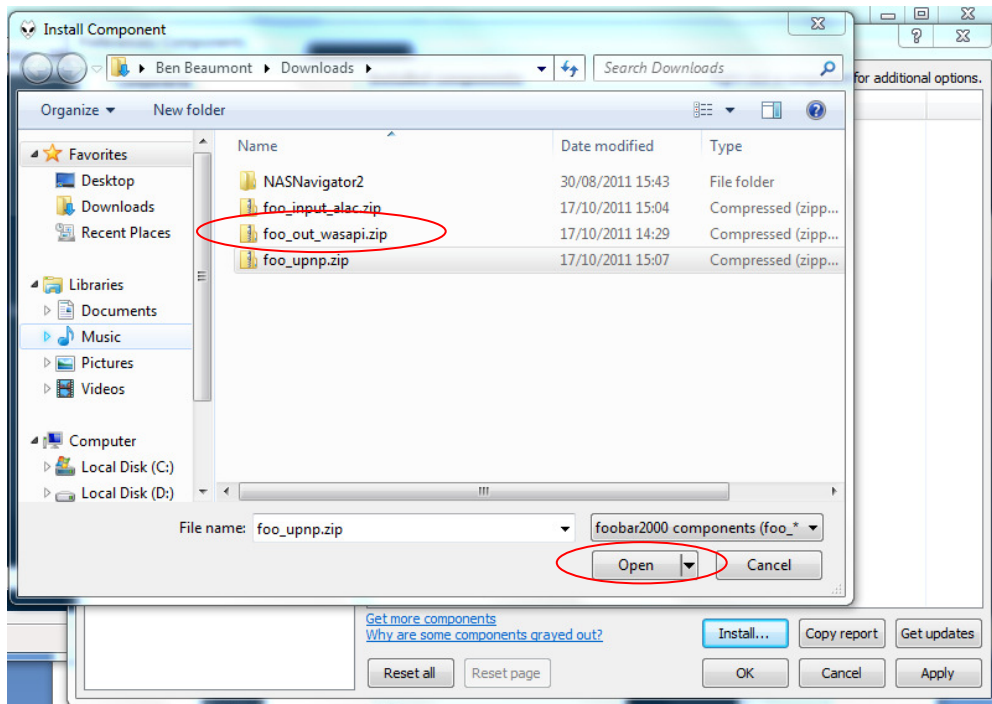
This takes you to an online download page where you can select and download the WASAPI output support plugin which is a zip file that can be saved to your PC.

To install the WASAPI component;

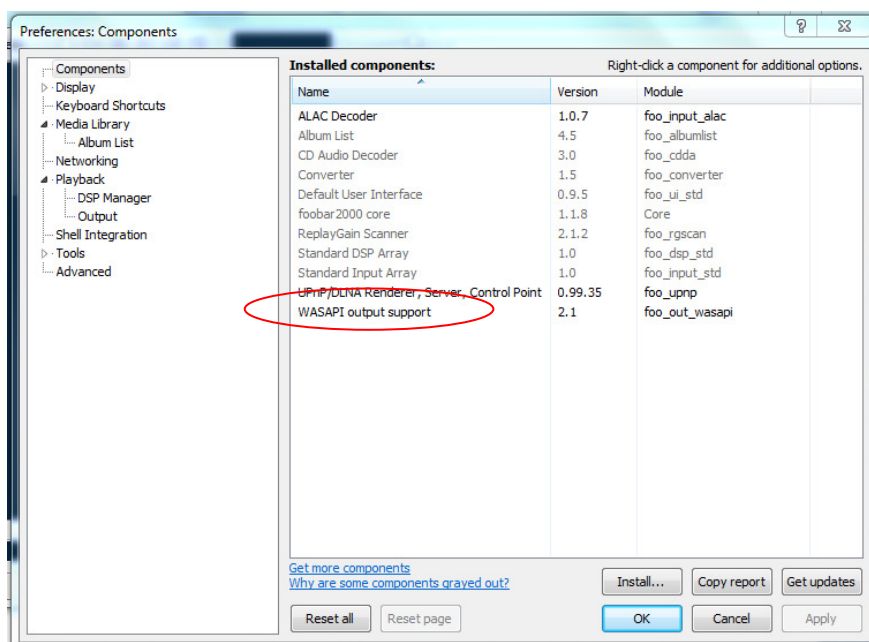
Step 1: Once again, open the foobar2000 preferences dialog.

Step 2: Go to the Components page.

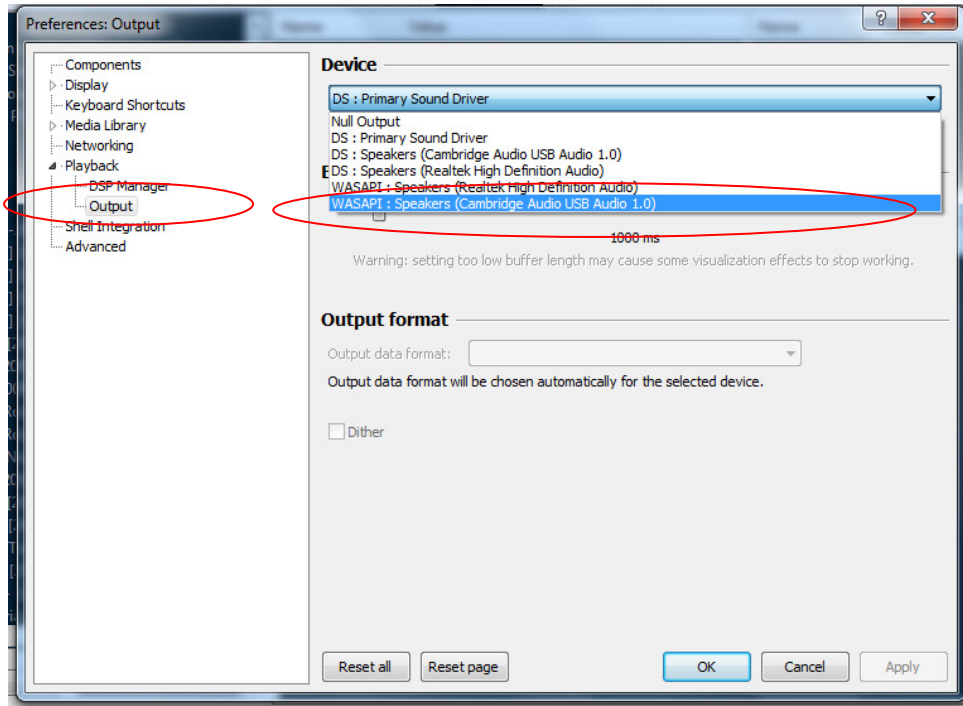
Step 3: Click the "Install..." button and select the plugin from the component archive.



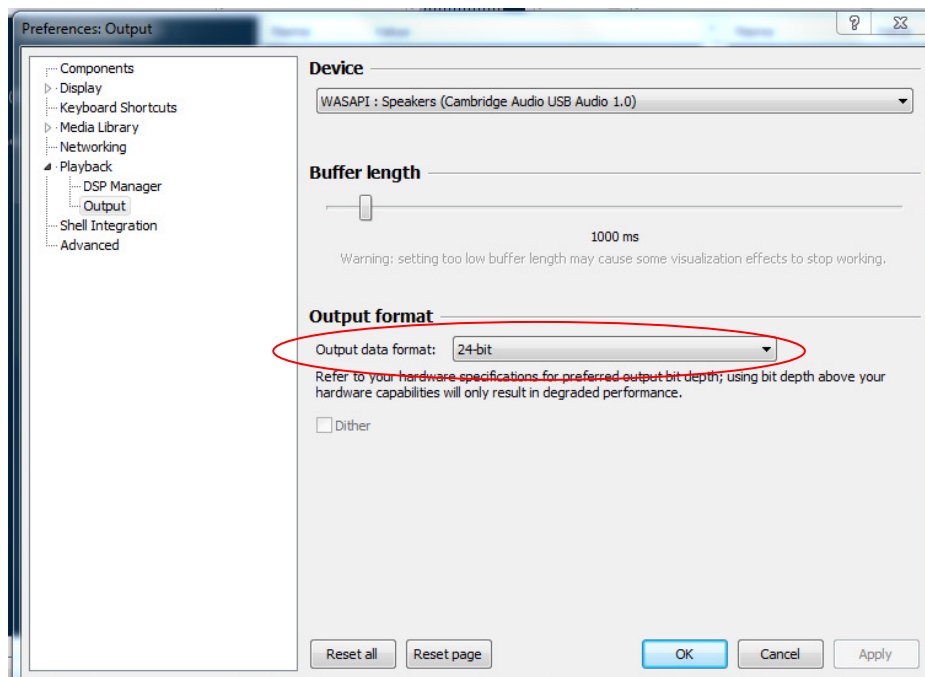
Step 4: Press "Open", you will be prompted to 'Apply' and restart foobar2000 in order to load the newly installed component. When foobar2000 restarts, you will see the newly installed WASAPI output support plugin listed in the components page.



- Now you must select WASAPI as the preferred output method. Go to the Preferences page once again and under Playback, select Output. Then select 'WASAPI (Cambridge Audio USB Audio 1.0)' as the output device.



- In the same Output page, set the output format to 24-bit, and press OK.



Apart from the improved sound quality, you will know that this has worked because the volume slider in the task tray has no effect on volume levels during playback. The sample rate and bit depth will now be adjusted dynamically according to the audio being played using foobar2000. The receiving Cambridge Audio USB product will display the signal information accordingly.